

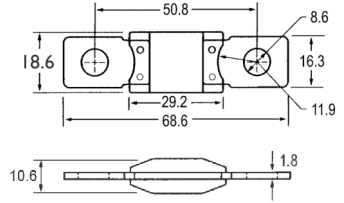
POWERVAL CALIBRE FUSE 32V



- Designed for high current circuit protection to protect starter cables.
- Ideal for starter and alternator connectors.
- These fuses allow the load of a starter motor or winch to operate without blowing the fuse, however they will open in the case of a direct short.



Part Number	Continuous Rated Current	Minimum Melting Current	Maximum Melting Current	Cable Size (mm ²)	Body Colour
POWCAL1	150A	380A	2000A	16	Grey
POWCAL2	150A	400A	2000A	25	Black
POWCAL3	180A	530A	2000A	50	Red
POWCAL4	180A	600A	2000A	50	Brown
POWCAL5	180A	700A	2000A	50	Wheat



Dimensions in MM

Voltage: 32VDC **I.R.:** 2000A at 32VDC
Characteristic: Slow Acting
Mounting: M8 or 5/16" studs
Terminal: (POWCAL1 - 2) Tin Plated Zinc Alloy.
 (POWCAL3 - 5) Tin plated Copper.
Pack Size: 1, 10, 100
Holders: Inline, Fuse Blocks, Power Dist. Unit.
Approvals:

RELATED PRODUCTS:



Inline Fuse Holder
(see p.82)



Fuse Block
(see p.96-101)



Fused PDU
(see p.111-115)

Scan this QR Code for more information



QR Code: 3004

FUSE STRIP WITH HOUSING 48V - 80V

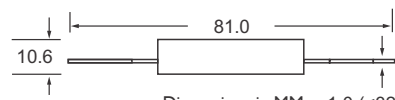
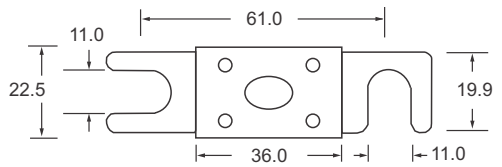


Part Number	Ampere Rating	Part Number	Ampere Rating
FBT030	30A NEW	FBT250	250A
FBT035	35A	FBT275	275A
FBT040	40A	FBT300	300A
FBT050	50A	FBT325	325A
FBT060	60A	FBT350	350A NEW
FBT080	80A	FBT355	355A
FBT100	100A	FBT400	400A
FBT125	125A	FBT425	425A
FBT130	130A	FBT500	500A
FBT150	150A	FBT600	600A
FBT175	175A	FBT675	675A
FBT200	200A	FBT750	750A
FBT225	225A	FBT800	800A



Straight Fork and 90 Degree Type Lugs

Voltage: 48VDC (30A-425A), 80VDC (500A-800A)
I.R.: 2.5kA at 48VDC, 3kA at 80VDC.
Characteristic: Fast Acting
Mounting: M10 or 3/8" studs.
Feature: Element window.
Pack Size: 1, 10, 20, 50
Approvals: DIN 43560, IEC60269-4, TUV



Dimensions in MM
 1.0 (<325A)
 1.5 (<600A)
 2.0 (<800A)

RELATED PRODUCTS:



Fuse Block & Cover
(see p.101)



Fuse Block
(see p.101)