

ELECTRIC VEHICLE AUXILIARY FUSES AE3 850V



General purpose fuse for EV / HEV auxiliary protection.

Cartridge

Part Number	Part Number	Ampere Rating
AE31500i07	AE31500i05	5A
AE31800i07	AE31800i05	8A
AE32100i07	AE32100i05	10A
AE32150i07	AE32150i05	15A
AE32200i07	AE32200i05	20A
AE32250i07	AE32250i05	25A
AE32300i07	AE32300i05	30A
AE32350i07	AE32350i05	35A
AE32400i07	AE32400i05	40A
AE32450i07	AE32450i05	45A
AE32500i07	AE32500i05	50A

Voltage: 850VDC **I.R.:** 20kA at 850VDC.

Time Constant: 1-3ms

Pack Size: 10pcs.

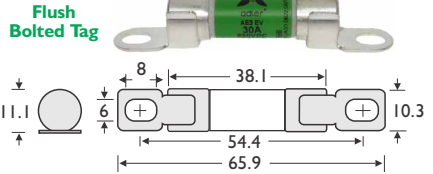
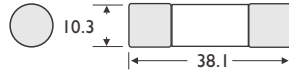
Holders (Cartridge): Fuse clips, blocks & Inline.

Holders (Flush Bolted): Fuse block.

Terminal Options: PCB Mount & Centre tag also available.

Approvals: UL Certified (E506666)

JASO D622, ISO 8820-8; GB/T 31465.6



FUSES + KITS

RELATED PRODUCTS:

Fuse Clips

BC800 (see p.68)



Cartridge Fuse Block

BH114-1C (see p.102)
BH114-CN (see p.102)



Flush Tag Fuse Block

BH114-1M (see p.102)
BH114-CN (see p.102)

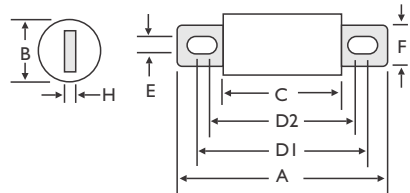


ELECTRIC VEHICLE PDU FUSES AE7 800V



AE7 EV fuses are specifically engineered and tested to provide best in class auxiliary protection.

Part Number	Ampere Rating
AE72600i25	60A
AE72700i25	70A
AE72800i25	80A
AE73100i25	100A
AE73125i25	125A
AE73150i25	150A
AE73175i38	175A
AE73200i38	200A
AE73250i38	250A
AE73300i38	300A
AE73350i38	350A
AE73400i38	400A
AE73450i51	450A
AE73500i51	500A
AE73560i51	560A
AE73600i51	600A



Voltage: 800VDC **I.R.:** 50kA at 800VDC

Time Constant: (L/R) 2 +/- 0.5ms

Holders: Modular fuse blocks.

Approvals: UL Certified (E506666)

UL248-20, IEC 60269-4

Dimensions in MM

Series	Amperage	A	B	C	D1	D2	E	F	H
AE7...i25	60A-150A	111	25	66	95	93	9	18	3
AE7...i38	175A-400A	129	38	72	107	89	10.5	25	6
AE7...i51	450A-600A	129	51	72	109	90	10.5	38	6

RELATED PRODUCTS:

Fixed Fuse Blocks

(see p103.)



Modular Fuse Blocks

(see p104.)



Email: info@prolecproducts.com.au
Web: www.prolecproducts.com.au